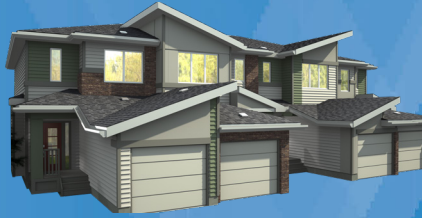


## ELEVATIONS



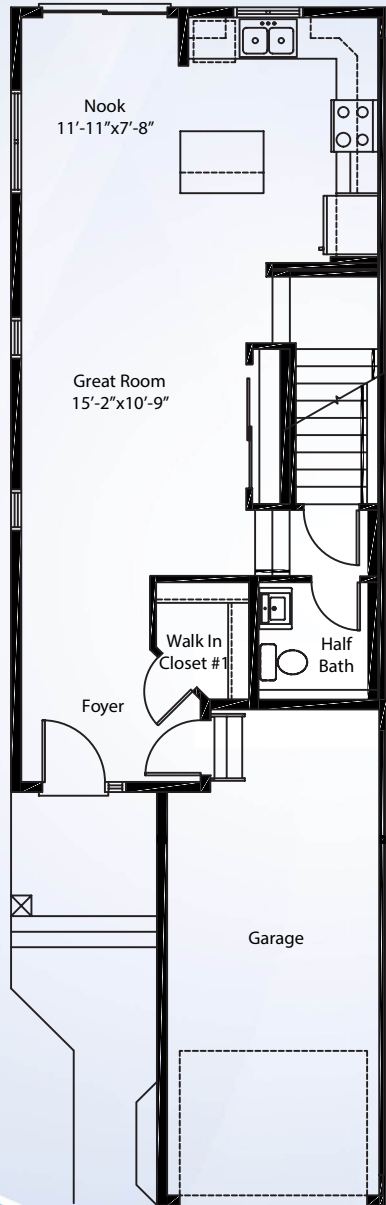
## HIGHLIGHTS

- Quartz Countertops throughout
- 9' Main Floors
- 36" Upper Cabinets
- Full Ceramic Backsplash
- Microwave Shelf
- 24" Cabinet above Fridge
- Gas HWT
- Luxury Vinyl standard on Main Floor & Wet Areas
- Decora Switches
- Winston Door Hardware

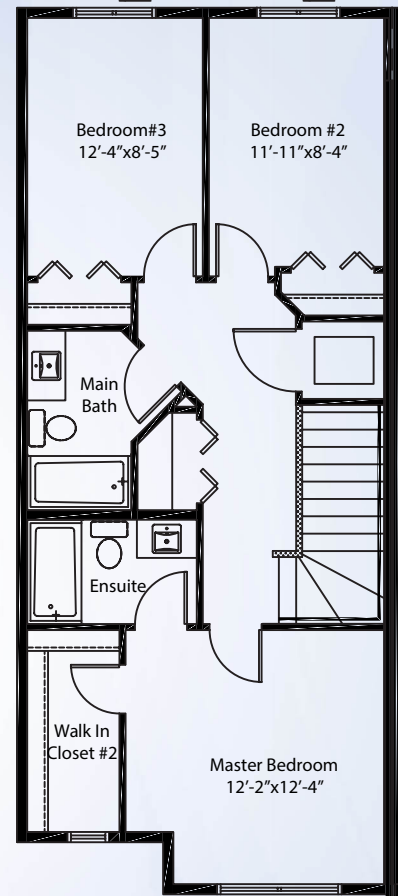
## STERLING ADVANTAGE

- Best Warranty in the City
- Award Winning Design Center Design Q
- 65+ Years of Building Experience

Main Floor | 650 Sq. Ft.



Upper Floor | 748 Sq. Ft.



# SAGE

Front Attached Townhome | 1398 Sq. Ft.  
3 Bed | 2.5 Bath

## Basement

